

WebVue

WebVue

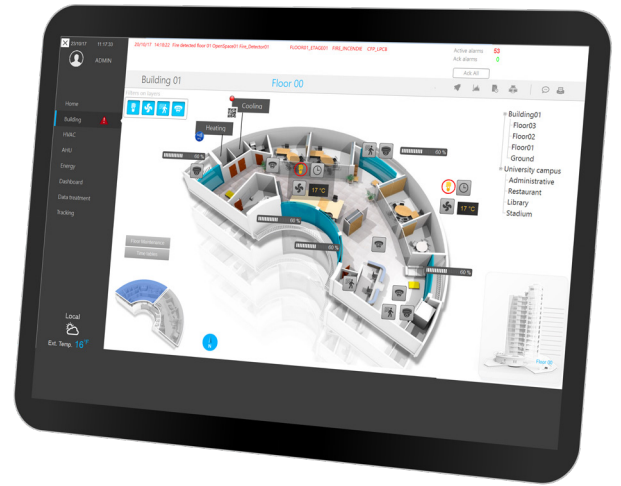
HTML5 web client

WebVue is built-in HTML5 web client providing a graphic interface to monitor and control your process from any device.

It relies on the latest technologies offering a cost-effective solution combining ergonomics, security and ease of implementation.

AT A GLANCE

- ✔ Monitor & control your PcVue process from a web browser with any devices
- ✔ Mimics, alarm lists & acknowledgment, event logs, real time and historical trends
- ✔ Webservices toolkit available to create your own custom web interface



USER ORIENTED

For end user, IT specialist or system integrator, WebVue is designed to fit any user need from regular to very advanced.

- UX** UX for better efficiency: seamless and smooth Interfaces
Ability to monitor multiple mimics concurrently in multiple web browser tabs
Cross platforms
- SI** Easy to configure and to deploy with the EasyMobile Technology
Multi user capacity
Scalable & open to third party application or portals
Transparent license model
- IT** Secure architectures (DMZ, certificates) and communication (HTTPS)

SECURITY & OPENNESS

Security management

The PcVue Web Server station uses Microsoft IIS and OAuth technologies to manage security and authentication jointly with the enterprise firewall. Exchanges are based on RESTful/Json Webservices via HTTPS protocols for encrypted data exchange (SSL V2).

Openness to third party applications

PcVue provides a RESTful/Json webservices toolkit so you can embed PcVue objects (mimics, symbols), real time data, alarms (creation, subscription to lists etc.), event logs (process events, user actions, logins etc.) and historical trends (changes of values etc.) into your own application or web portal.

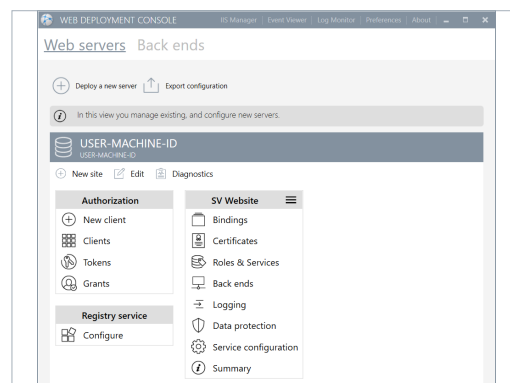


EASY MOBILE TECHNOLOGY

WebVue is based on the exclusive EasyMobileTechnology ensuring a fast, easy and secure configuration and deployment.



- ✔ No gateway, no extra plugin
- ✔ HTML5
- ✔ No client installation
- ✔ A deployment console for easy configuration – no scripts – Wizard only
- ✔ Open to third-party application
- ✔ For any user: End-user, SI, IT
- ✔ Secure scalable architecture and communication
- ✔ Easy diagnostic
- ✔ Affordable solutions



THE DEPLOYMENT MADE EASY

The EasyMobileTechnology allows deploying web architectures from regular to the most advanced and secured in few clicks!

Go web in 5 easy steps through wizards of the Web Deployment console

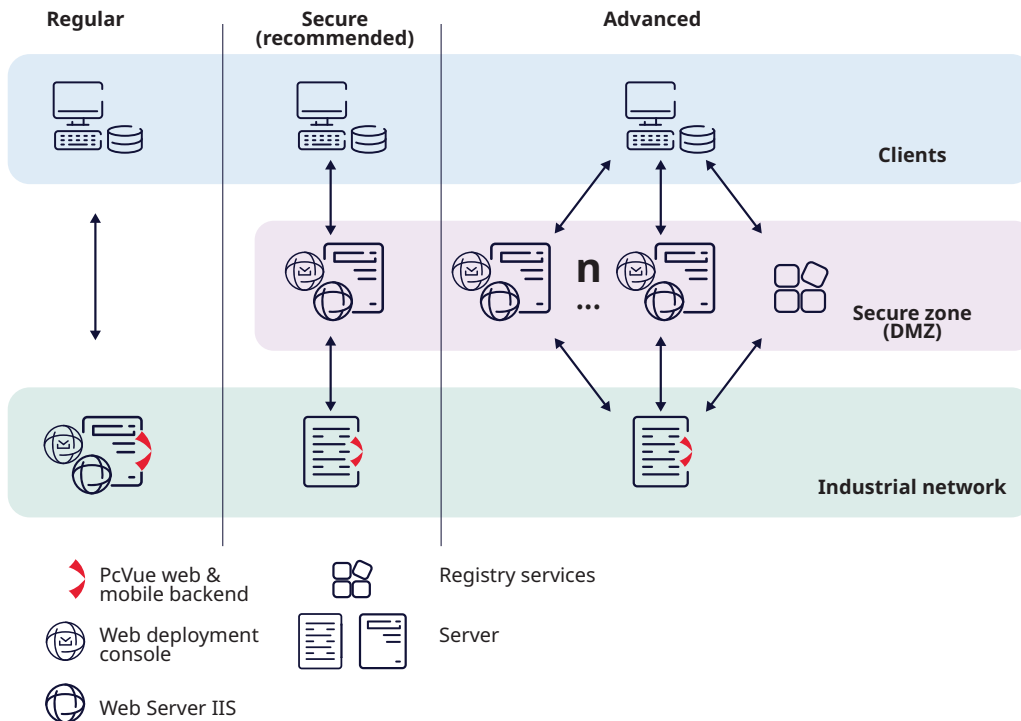
Step 1: Setup your mobility server

Step 2: Bind your PcVue server

Step 3: Secure the connection with a HTTPS certificate

Step 4: Deploy

Step 5: Run WebVue from your webbrowser



NOT SUPPORTED FEATURES

Features	Comments
ANIMATIONS & CONTROLS	
Color – Legend animation	
Send – Recipe animation	
Send – Region animation	
Send – Languages animation	
Send – Timetable animation	
Run – Macro animation	
Security – Password animation	
VIEWERS	
Grid control	
Chart control	
Map control	
Pie/Doughnut/pyramid control	
Trends viewer, logs viewers, alarms viewer	With limitations. Check with your local technical support.
CONTROLS	
Messaging control	
Text-box form control	
Others form controls	Appearance may be different, in particular the intermediate state of a check-box list or option-button list control is not available.
Variable link with form control for mimics	Not available. Use SCADA Basic is required.
Third party ActiveX control	
Variable links	
Use of substitution strings for opening mimics : #I,#P,#U,#M..	

MIMICS	
Multimedia file (AVI)	
Repeated mimic in the PcVue workspace	Only the first instance appears in the WebVue Client
Multi-screen and region management	
Control Zone animation accelerator keys	
OLE objects in mimics	
Run – Macro animation	
Security – Password animation	
VIEWERS	
3D mimics	
Replay mode	
No Layer selection toolbar for the user for the visibility of graphic objects according to layers	
Zooming via SCADA Basic and decluttering features	
SCRIPTING	
VBA and Enable scripts	
SCADA Basic instructions and modes	Partially supported. See Help.
DATA PROCESSING	
Data Export	
CONFIGURATION	
Application Explorer Application Architect SCADA BASIC VBA Smart Generators	



ARC Informatique

✉ arcnews@arcinfo.com

🌐 www.pcvue.com



ARC Informatique is ISO 9001,
ISO 14001 and 27001 certified