



# TOUCHVUE

The mobile app for immediate action

# TOUCHVUE\*

The mobile app for immediate action

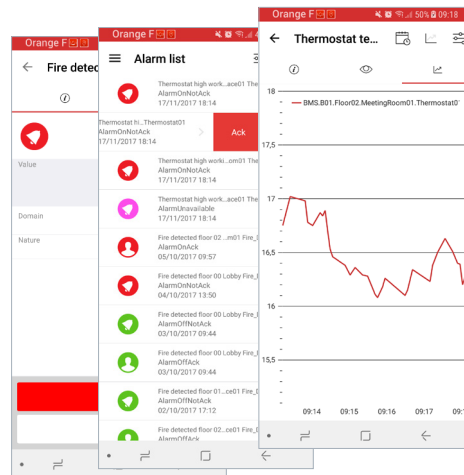
TouchVue is a mobile app notifying the mobile user of any event on the process and providing an interface to react. It relies on the latest technologies offering a cost-effective solution combining ergonomics, security and ease of implementation.

## FEATURES

- On-call/on-duty mobile app for PcVue
- Latest ergonomic design
- Based on the EasyMobileTechnology for easy configuration and deployment
- Access the data from several sites
- Real-time information and notifications (alarms, values, trends) for immediate action (acknowledgments or control values)
- Archived data (events logs, historical trends)
- Contextual mimic display
- Data filter depending on user profiles
- Watchlist for favorite variables to watch

Ready to use app - No extra development

TouchVue embeds all the interface and features with no extra development. You just have to connect to a PcVue server and you'll get notifications, values and controls!



## BENEFITS

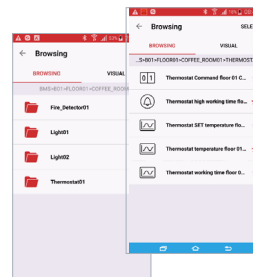
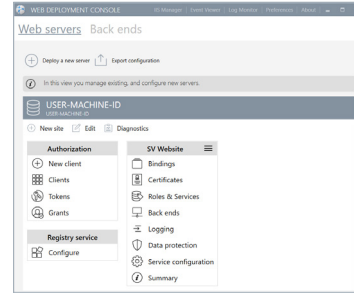
- Ready to use - No extra development - Easy to add to an existing PcVue project
- The easy notification solution
- Fill the gap where remote access and light clients are not enough
- Help both sub-contractors and end-users in increasing productivity
- Give managers an eye on their site
- Cost effective solution
- Lean on PcVue user rights

## EasyMobileTechnology



TouchVue is based on the exclusive EasyMobileTechnology ensuring a fast, easy and secure configuration and deployment.

- ✔ No gateway, no extra plugin
- ✔ HTML5
- ✔ No client installation
- ✔ A deployment console for easy configuration – no scripts – Wizard only
- ✔ Open to third-party application
- ✔ For any user: End-user, SI, IT
- ✔ Secure scalable architecture and communication
- ✔ Easy diagnostic
- ✔ Affordable solutions



## Security management

TouchVue connects a PcVue Web Server station which uses Microsoft IIS and OAuth technologies to manage security jointly with the enterprise firewall. Through management of user rights and authentication process, TouchVue gets real-time notifications and access in polling mode to realtime values of PcVue's variables and lists of alarms, historical data, etc. Those exchanges are based on RESTful/Json Webservices via HTTPS protocols for encrypted data exchange (SSL V2).


\*This brochure is related to version 12



## ARC Informatique

Headquarters and Paris office  
2 avenue de la Cristallerie  
92310 Sèvres, France

 +331 4114 3600

 Hotline: +331 4114 3625

 [arcnews@arcinfo.com](mailto:arcnews@arcinfo.com)

 [www.pcvue.com](http://www.pcvue.com)



ARC Informatique is ISO 9001,  
ISO 14001 and 27001 certified