





Dream Report™

Reporting Software

Dream Report™

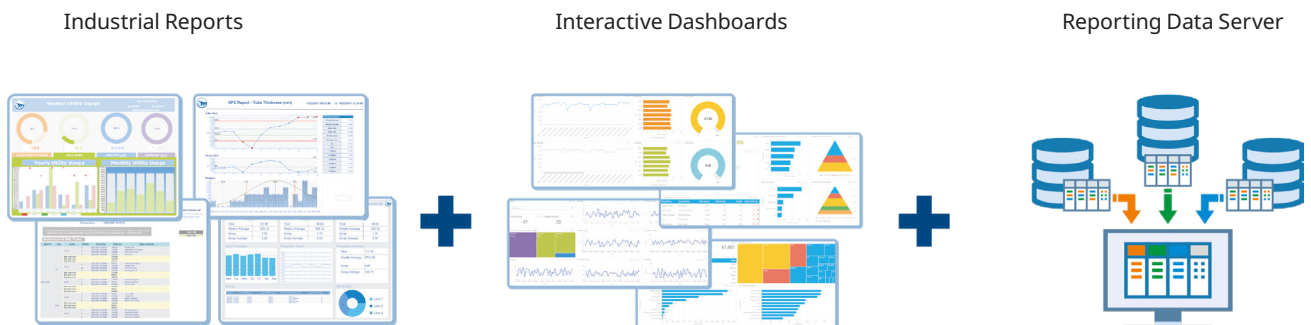
User Friendly & Programming Free™ Reports & Dashboards


 Dream Report™ is the World's Leading User-Friendly Reporting and Dashboarding for Industrial Automation and for Non-Programming Users
 

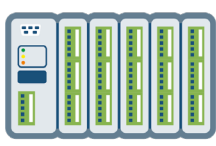
Dream Report™ can connect to industrial and business data sources using standard or proprietary protocols. Dream Report™ will access their data, analyze it and generate reports and dashboards automatically or manually. Results can be distributed to anybody, anywhere, and anytime. An interactive and dynamic web portal provides local and remote secure access to your information. Dream Report™ perfectly fits both continuous and batch reporting applications.

Designed for non-programming users, its user-friendly designer studio enables users to develop professional reports simply and easily, through powerful objects and statistical functions delivered in Dream Report™. This software is designed and intended for automation engineers, but IT professionals will like it too.

THE MOST RECOMMENDED SOFTWARE FOR INDUSTRIAL REPORTING



DREAM REPORT™ COMMUNICATION AND DATA ANALYSIS ENGINE



PLC



Databases



SCADA, HMI



Historian



IoT

- User Management
- Interactive Web
- Data Models (S95)
- Energy Management
- Batch Reports
- Manual Data Entry
- CIP Reports
- FDA 21CFR Part 11
- SPC Reports
- Powerful Scripting
- Water and Waste Water

Web Live Dashboards

Reports

Reporting Data Server

ACCESS TO

- ✓ All Communication Drivers
- ✓ All Statistical Objects

PUBLISHING

- ✓ Interactive Objects
- ✓ Online Filtering
- ✓ Library of Widgets
- ✓ Live Dashboards

GENERATION

- ✓ Manually
- ✓ Scheduled
- ✓ On Event
- ✓ Command Line
- ✓ Dynamic URL

PUBLISHING

- ✓ PDF (Secure)
- ✓ CSV
- ✓ Excel
- ✓ XML
- ✓ Web Page

DISTRIBUTION

- ✓ File Server
- ✓ Email
- ✓ Print
- ✓ FTP Server

PUBLISHING DATA

- ✓ OPC DA Server
- ✓ OPC UA Server
- ✓ JSON/REST API

CALCULATED DATA

- ✓ Statistical Objects
- ✓ SQL Queries
- ✓ KPIs

INDUSTRIAL COMMUNICATION PLATFORMS

- Library of 100+ Communication Drivers
- Vendor Specific Proprietary Protocols
- Industrial and Business Standard Protocols

Real-Time Values

- Direct Browse of Tags
- Read Real-Time Values
- Value Change Events

Historical Values

- Direct Browse of Tags
- Databases & Proprietary Archives
- Access Raw and Calculated Data

Historical Alarms

- Databases Archives
- Access to Every Property of Alarms
- Filter Alarms by any Property

CONNECTIVITY

- PcVue®
- OPC®
- ODBC
- CSV
- MS Excel
- Modbus®
- SNMP
- OLE DB
- ...

USER-FRIENDLY DESIGNER STUDIO

User Friendly Interface for Non-Programming users

Drag & drop, What You See is What You Get (WYSIWYG)

Integrated library of graphical objects

Charts, Tables, Bar and Pie graphs, ... many others

Integrated library of statistical functions

Over 100+ integrated functions (statistic, batch, OEE, energy, ...)

Remote development

Develop a project from a local or remote studio

Web-Enabled connection

Concurrent development

Develop your project with multiple engineers

Database project depository, version control, Lock/Check-in-Out per developer

Secure environment

User access authentication, Audit-Trail, Built-in Version control



INTERACTIVE INDUSTRIAL WEB PORTAL

Clean and open web technology

HTML5, Java Script, compatible with all common browsers

Secure access

User authentication, HTTPS, user access per report

Automatic publishing of reports



Interactive and dynamic reports and dashboards

Combo boxes, buttons, hyperlinks, check boxes, date/time pickers, ... Slideshow

Periodically generate and display a sequence of reports in a loop

Dynamic URL and WebAPI

Dynamically generate web report with external parameters by dynamic URL

Advanced manual data management

Input manual values, correct values, submit manual data to a database, user-based authentication

Available on mobile devices

All functionality is available on Android and iOS



WEB INTERACTIVE DASHBOARDS

Dedicated designer

- Access to all data in a Dream Report™ project and add data from business sources
- Library of dashboarding graphical objects
- Present, filter, drill-down any available data
- Web-based user interface
- Unique 2-in-1 solution “reporting + dashboarding” for automation industry



Runtime environment, seamlessly integrated into Dream Report™ Web Portal



SECURITY FOR INDUSTRIAL APPLICATIONS

User management

- Local or Windows-Integrated user management
- Support Windows local or/and domain users and user groups
- Extended user access control to reports and modules
- Localized language by user or group

Audit-Trail Recording

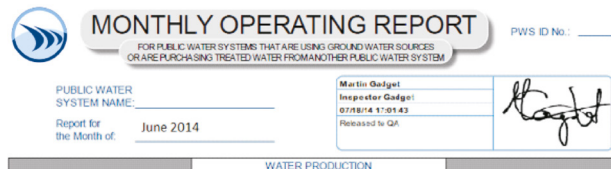
- Record all user activities into a database

Version Control

- Secure version id stamp on reports
- Ability to roll back to the specific (certified)
- Report version
- Track user changes in secure database

Electronic Signatures

- E-sign pdf reports
- Web-based signing tool



INDUSTRIAL MODULES

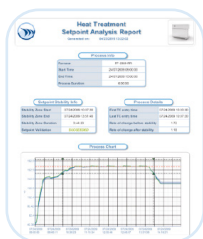
SPC – Statistical Process Control

- Full support of SPC
- Library of SPC objects
- SPC statistical functions
- Support of Nelson rules



Advanced cost calculation

- Define complex rules
- Rates on time, dates
- Rates on overconsumption
- Calculate total cost



Setpoint analysis

- Analyzing setpoints
- Process analysis statistics
- Flexible validation rules
- Process auto-validation

Database data logger

- Archive real-time data into a database
- Archive calculated and aggregated values into a database
- Define logging groups by conditions, frequency and schedule
- No database administration is required: database and tables are automatically created and maintained
- Supports leading database types:



- No additional cost – included in the standard product license
- An ideal mini-historian for small projects

BATCH REPORTS

Batch Reports

Access or create batch information – batch ID, start, end time

Auto-report generation on batch end (or start)

Automatically generate/distribute reports on batch end (or batch start) event

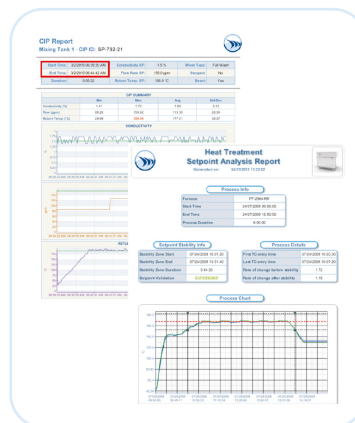
Manual generation on selected batch ID

- Select specific batch ID from automated list of available batches
- Dream Report™ will automatically perform time-based historian
- Data access for batch results

Golden batch

Set golden batch pre-defined profile for reference or comparison

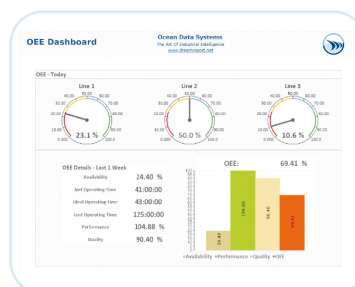
Integration with standard and custom batch systems



OEE, PERFORMANCE AND DOWNTIME ANALYSIS

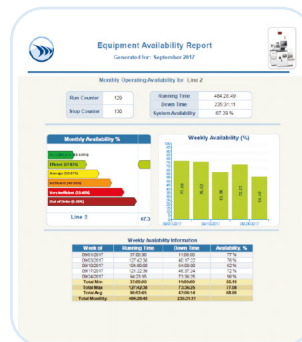
Dream Report has built-in functions to calculate

- Equipment running time
- Equipment down time
- On counter / off counter
- System availability
- Production KPLs
- Conditional calculations



Proactive maintenance reports - automatic report generation and distribution

- Generate and send report as soon as up-time reaches pre-defined value
- Generate and send service request upon equipment running time
- Let system analyze and control maintenance of your equipment for you!



ALARMS REPORTS AMS/ISA 18.2 STANDARD

Filter alarms by various criteria

Alarm statistics

Generate alarm statistics such as count of alarms by filters, timestamp of first alarm, timestamp of last alarm

Analyze alarms

Calculate, display and filter alarms by number of occurrences, min/max duration, response time

Document and display alarms

Generate alarm reports for archiving and distribution

Automatically deliver results

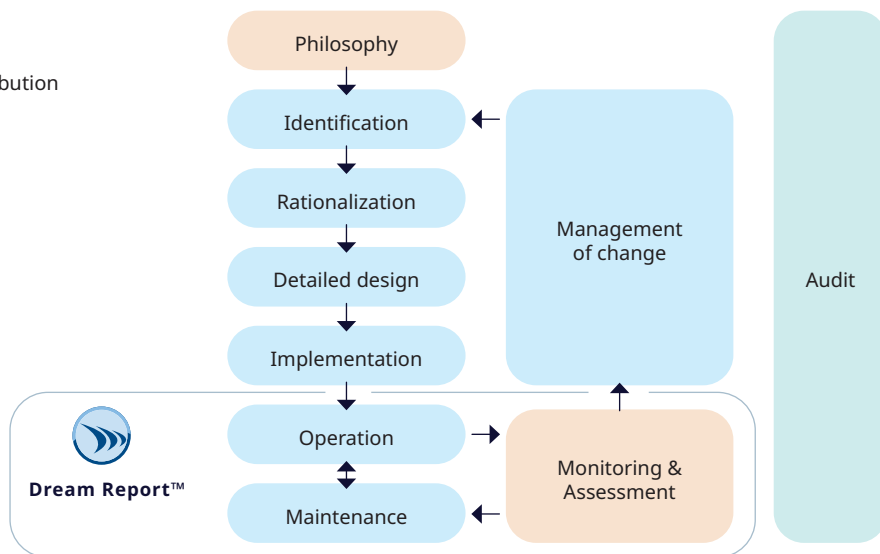
Email reports, FTP files, automatically populate a browser based portal

Perform document management

Delete old files, delete after x files, move old files, etc...

ISA 18.2 - Interactive analysis of alarms

Provide an interactive interface to your alarms for real-time review and analysis



Dream Report™ Licensing

All Dream Report™ license models include all drivers, enable unlimited number of report templates, enable to generate and distribute reports to all output targets in all available formats. Scalable tag-based license models enable users to select the appropriate best-fit license model in accordance with the project scale and budget.

A tag is considered as one data point at external data source. Flexible tag-based license models (Tags 50 - 250 - 1000 - 5000 -

10000...) Web portal license models are based on the number of concurrent web clients. (2 - 5 - 10 - 25 - 50 - 100 - 200).

Dream Report™ for PcVue is a bundle that cannot be delivered without a PcVue license. It offers connectivity only to PcVue® using Web Services.

Dream Report™ versions for 50, 250, 1000 tags, and with or without WebClient are available.


Dream Report™ is developed by Ocean Data Systems (ODS).


As standards, specifications and designs change from time to time, please ask for confirmation of the information given in this publication.



ARC Informatique

Headquarters and Paris office
2 avenue de la Cristallerie
92310 Sèvres, France

 +331 4114 3600

 Hotline: +331 4114 3625

 arcnews@arcinfo.com

 www.pcvue.com



ARC Informatique is ISO 9001,
ISO 14001 and 27001 certified