



PcVue Solutions®

How to migrate a
PlantVue 2.6 project into PcVue 10
(Graphics and Scripts only!)

Daniel Schmidt
29.08.2012



Step 1:

Open the PlantVue project. Convert all graphics into ASCII format via the library converter.

Step 2:

Due to that a direct import of graphics and VBA scripts won't work, you have to take a detour over the Factory Link Client Builder.

It is assumed that Factory Link is installed.

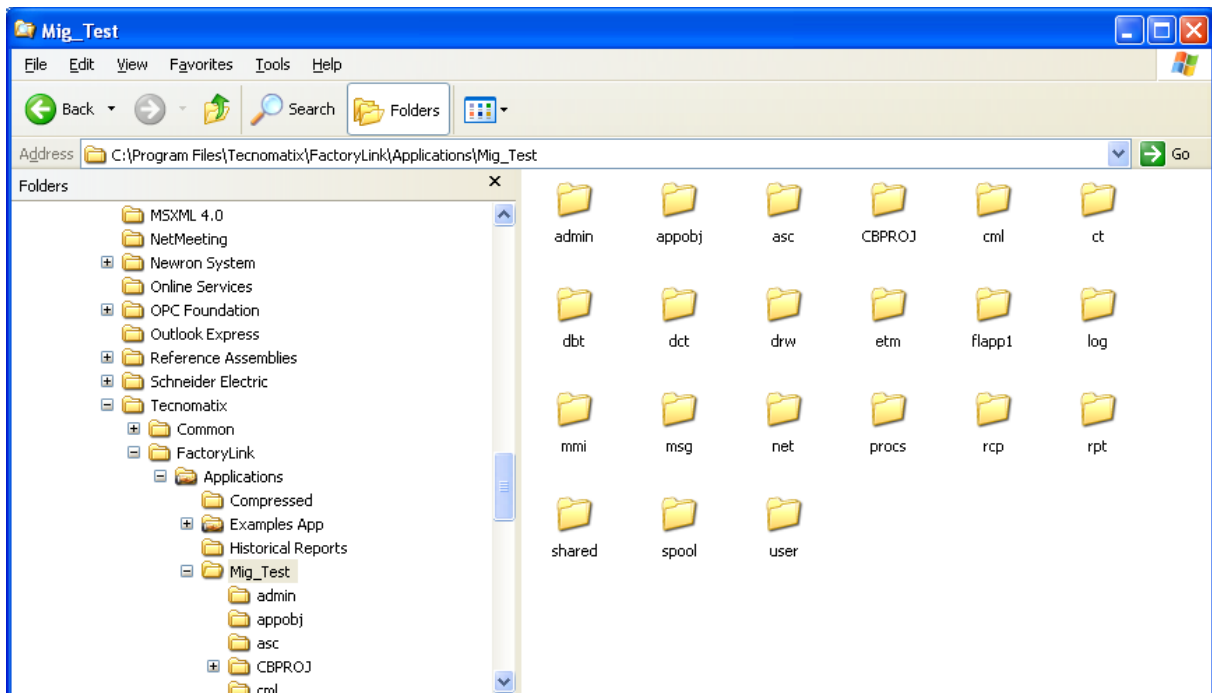
Step 2a:

Open a new Client Builder project. Manually create the folder CBPROJ and copy all automatically created folders in this one.

Step 2b:

Switch to the Example Project Folder. Copy all folders, except CBPROJ, into your new project folder.

It should look like this:

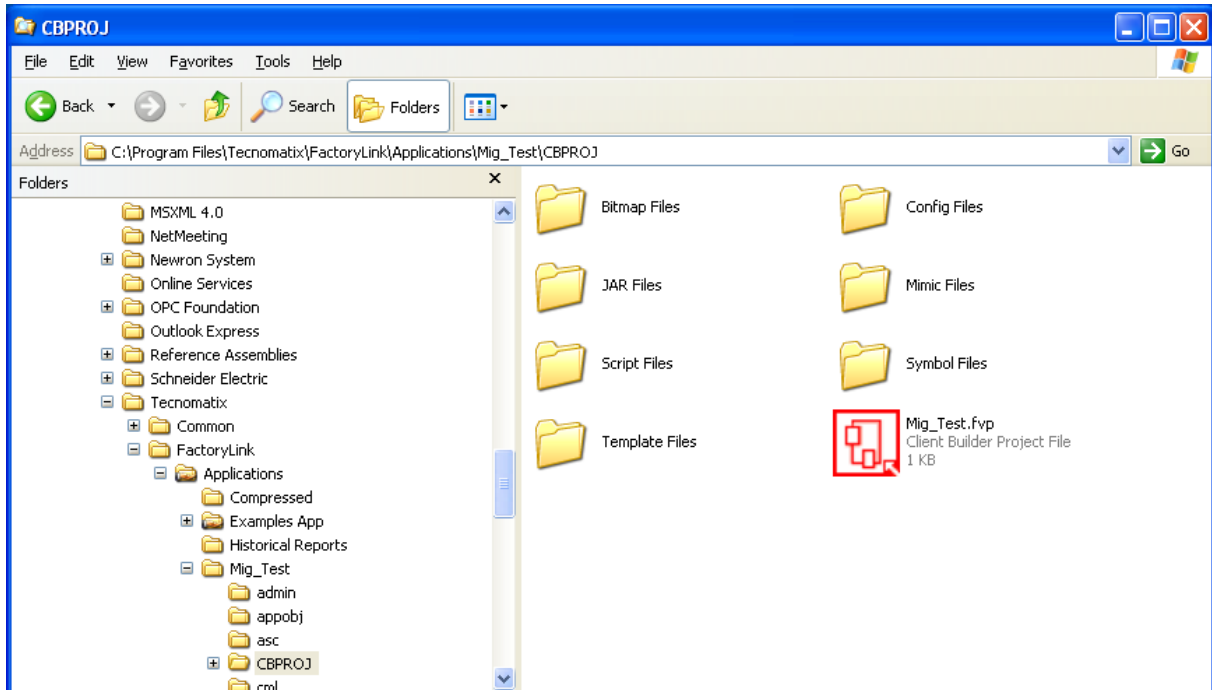


This step is very important. Otherwise you will get an error while trying to import the project via the Factory Link Importer!!

Step 2c:

Copy all PlantVue files, except the config files, in the respective folders of the Client Builder project.

The folders have the same names in PlantVue and Client Builder.



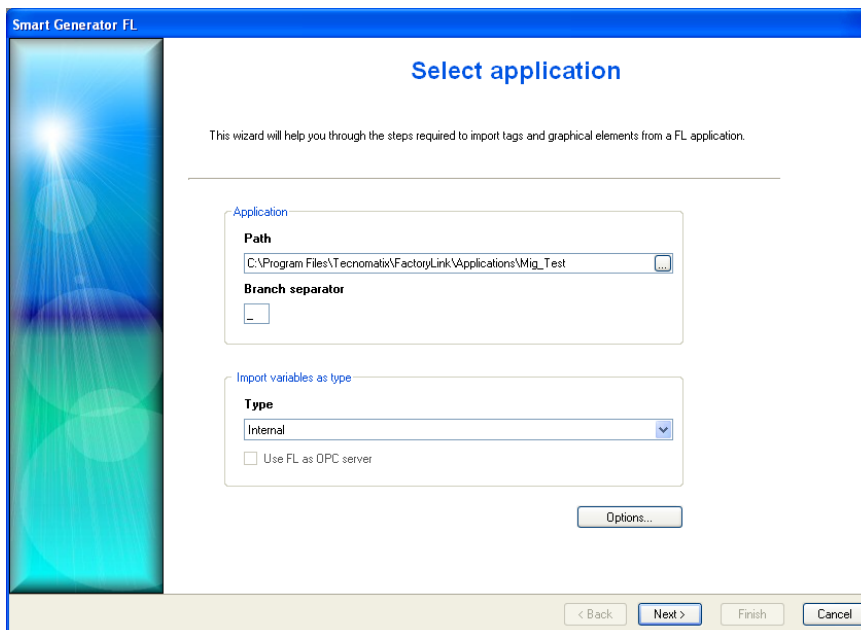
Step 3:

Start PcVue and open a new project. Start the Factory Link Importer.

Configure -> Smart Generators -> New Factory Link import

Step 3a:

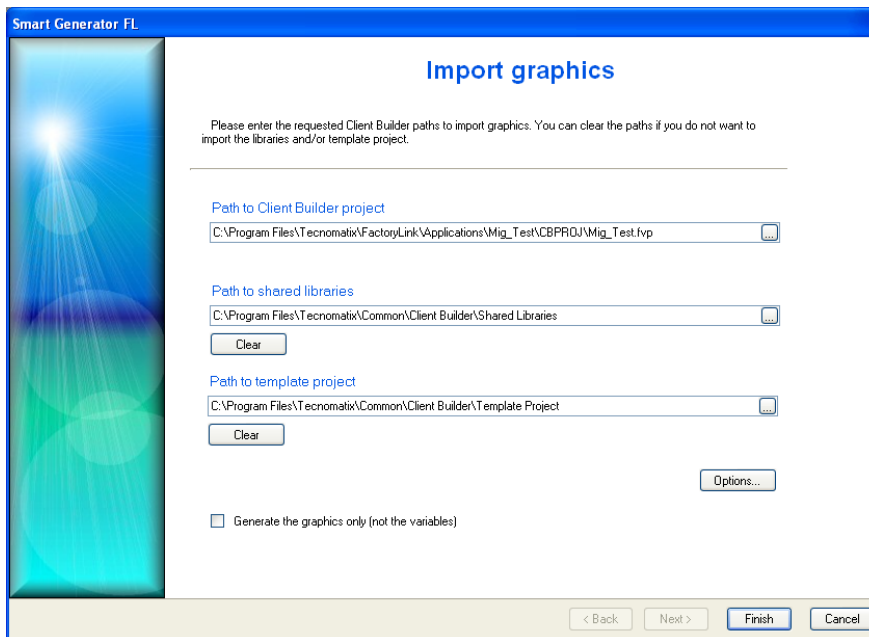
Select the project file to be imported.



Open the Options menu and uncheck all checkboxes. Click Next. Confirm step 2, 3 and 4.

Step 3b:

When you reach this screen, follow the next instructions.



- Select the Client Builder project file
- Clear the “Path to shared libraries”
- Clear the “Path to template project”
- Check the box “Generate the graphics only (not the variables)”
- Open Options menu
 - o Languages: Select language and roles
 - o Options: Check all boxes in the “General” section
 - VBA scripts: Select “Import VBA scripts” or “Import and comment VBA scripts”
 - With the first option, you will get errors when opening a mimic due to missing variables.

Now all graphics and VBA scripts are imported, NOT the variables.